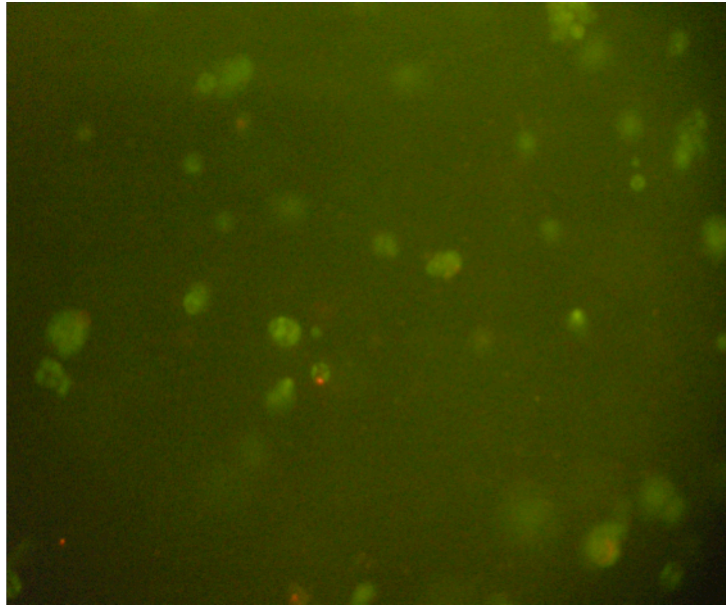
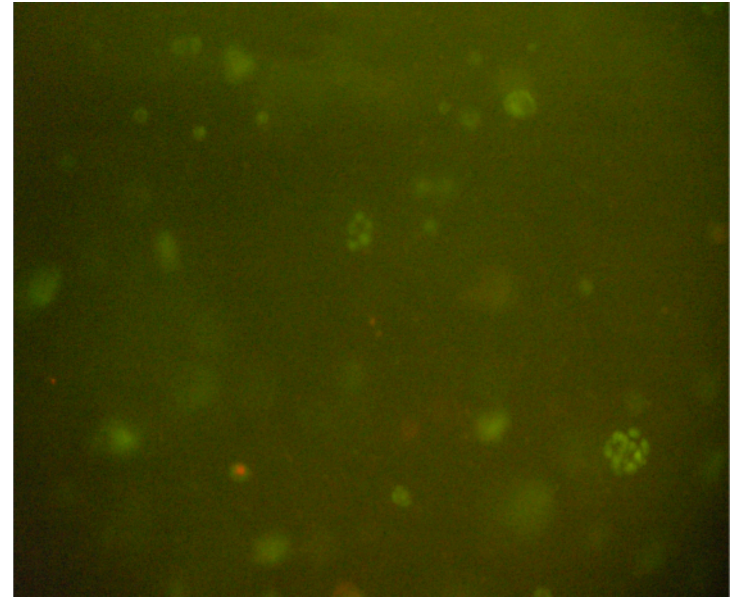


a



b



LIVE/DEAD cell viability assay | All images were obtained from looking down into the core of each bead at 10X magnification. **(a)** Bead taken from sample that contained media with 40 $\mu\text{L}/\text{mL}$ ascorbate, all other parameters standard. **(b)** Bead taken from sample that contained media with 80 $\mu\text{L}/\text{mL}$ ascorbate, all other parameters standard.